

# Glass Board with Hidden Rail Assembly Instructions Sheet

## What you will have:

- 10 x Screws\*<sup>1</sup>      A
- 10 x Wall plugs\*<sup>1</sup>      B
- 2 x Long rails for landscape orientation      C
- 2 x Short rails for portrait orientation\*<sup>2</sup>      D

\*<sup>1</sup> The 120 x 90cm board is supplied with only 4 screws and wall plugs, because it only has one rail to fix to the wall.

\*<sup>2</sup> The 240 x 120cm and 180 x 120cm boards are supplied with 2 long rails for landscape orientation and 2 short rails for portrait orientation. The 150 x 120cm board is supplied with 2 rails only, which can be used for landscape or portrait orientation.

## Finished Product:



<p>A x 10</p>	<p>B x 10</p>	<p>C x 2</p> <p>Supplied screws to be used in these holes</p>	<p>D x 2</p> <p>Supplied screws to be used in these holes</p>
---------------	---------------	---	---

Before you use your new glass board for the first time make sure you clean all the panels thoroughly. If you have any further enquiries on how to fit your glass board please contact our customer service team.

**Please Note:** Our glass boards are heavy and will require 2 people to assemble and install the boards

**STEP ONE**

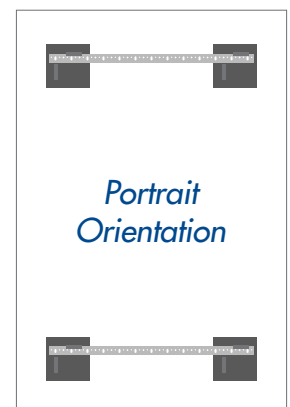
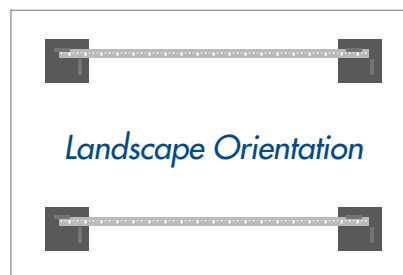
Remove fixing rails from packaging x1 (120 x 90cm)

Remove fixing rails from packaging x2 (150 x 120cm)

Remove fixing rails from packaging x4 (240 x 120cm and 180 x 120cm)

2 x long rails are for fixing the glass board in landscape position

2 x short rails are for fixing the glass board in portrait position



# Glass Board with Hidden Rail Assembly Instructions Sheet

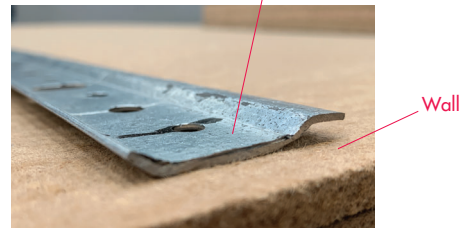
STEP TWO

**(240 x 120cm and 180 x 120cm ONLY)** If you are not assembling a 240 x 120cm or 180 x 120cm board, please skip to step 3.  
Once orientation is decided, 2 of the 4 rails provided can be put aside as they won't be required.

STEP THREE

Fit the top rail to the wall at the required height, ensuring the rail is level with the use of a spirit level. Evenly space and drill 5 screws through the holes on the rail to fit the rail to the wall.  
**Please Note:** Remember to measure the distance from the rail to the top of glass board to ensure you install you board at the correct height.

Please ensure that the centre piece of the rail is flat against the wall, with the extended lips protruding for your glass board clasps to latch on to.



STEP FOUR

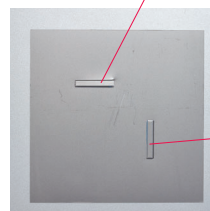
Repeat step three with the bottom rail, ensuring it is spaced correctly with the top rail.



STEP FIVE

Next, install the glass board on to the rails, allowing the upper and lower clasps on the rear of the glass board to full engage and latch onto the rail.

Ⓐ for landscape orientation



Fixing clasp on the rear of the glass board

Ⓑ for portrait orientation



**Create, Shape & Communicate**