



THE HUMAN TOUCH

Large format Touch-screen LCD displays for the private and educational sector



BEYOND THE BEAMER

Following the swift introduction of Interactive Whiteboards, it's successor is now taking schools and businesses all across Europe by surprise. This next generation of tools takes Interactive boards to the next level. Look, point and click: it doesn't get any simpler.

Control your computer with your fingertip through the LCD monitor. Write and erase, but you can also load trusted programs like Word and Excel with one finger.

Control is everything!

65 inch



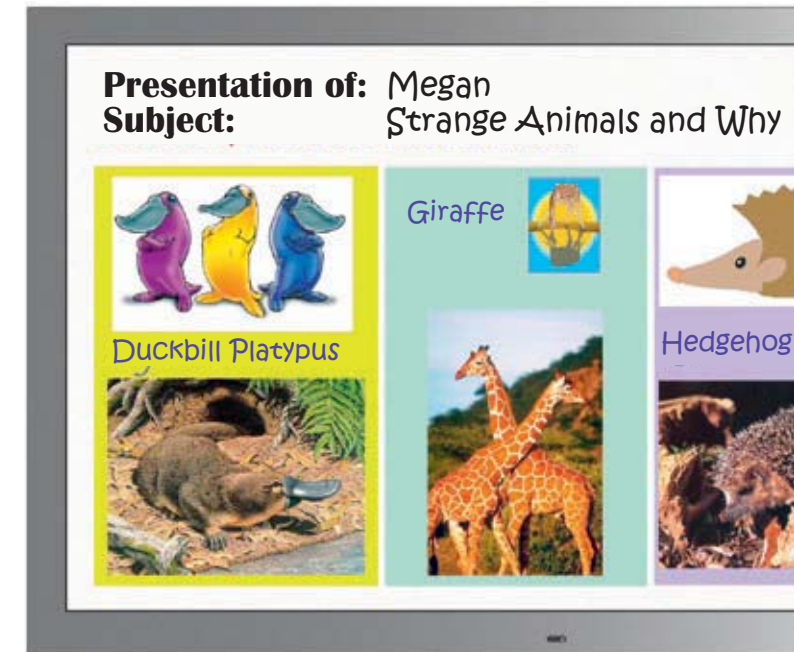
An all-in-one solution!

The Focus Touch program is a complete series of Full HD LCD screens, with built-in Infrared touch option. Hook up the LCD monitor to your computer or laptop, install the touch driver and get started immediately!

What do you **NOT** need any more?

- A beamer... nor any linked products, like beamer supports, lamps, filters etc.
- Digital pen with batteries
- Special software

55 inch



IDEAL CONDITIONS FOR TRANSFERRING KNOWLEDGE

The wide range of 32"-65" monitors offers a suitable choice for anyone. All components used are of industrial quality and built to last. With a life expectancy of 50.000 hours these monitors will last a life time. Solid metal casing and the absence of moving parts makes these monitors durable and maintenance free. A solid solution for highly dynamic environments like boardrooms and schools.

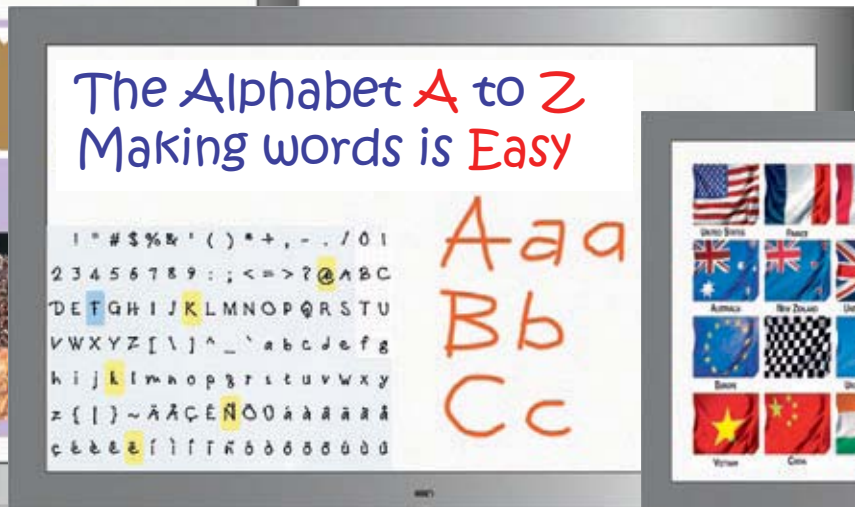
Anything you can do with Windows or a regular digital whiteboard, you can also do with Focus Touch. But that is not all! For use as a digital whiteboard we also deliver the well known Focus Board software with each monitor. This easy to use software package has a Windows 'look and feel'. Preparing lessons and presentations has never been this easy.

Write or draw over Powerpoint presentations or internet pages and automatically save all pages on your computer. Personalise the software by adding to the extensive library and even adapting the menu's!



42 inch

32 inch



THE FUTURE WITHIN REACH

Focus Touch rids you of many irritations!

- No problems with alignment
- No problems with sunlight or indirect light in the room
- No heat admission from any projector
- No digital pen or batteries
- No maintenance (no moving parts)
- Only minimal calibration moments
- No noise from cooling fan (fanless design)
- No glaring into bright beamer light
- No problems with broken lamps
- The LCD screen has no Hot Spot
- Your not working in your own shadow
- Works with any stand alone software

Interactive lessons made easy!

- Ergonomically safe
- Environmental friendly because of low energy use
- Built for 24/7 usage
- Industrial components make for long life expectancy (50.000 hours)
- Very strong hardened glass surface, vandalism proof
- High brightness, easy on the eyes
- Films on HD-quality are no problem

Complete demo-models are available at several locations throughout Europe. Call for an appointment



The hardened glass that is used for these monitors meets up to the following standard: UL-1950 (a drop test at the centre of the glass, with a steel bal of 500 gram/Ø 50 mm from 130 cm height does not break the glass). Fingerprints, dirt and smudges or even scratches do not interfere with a proper operation of the touch monitor.

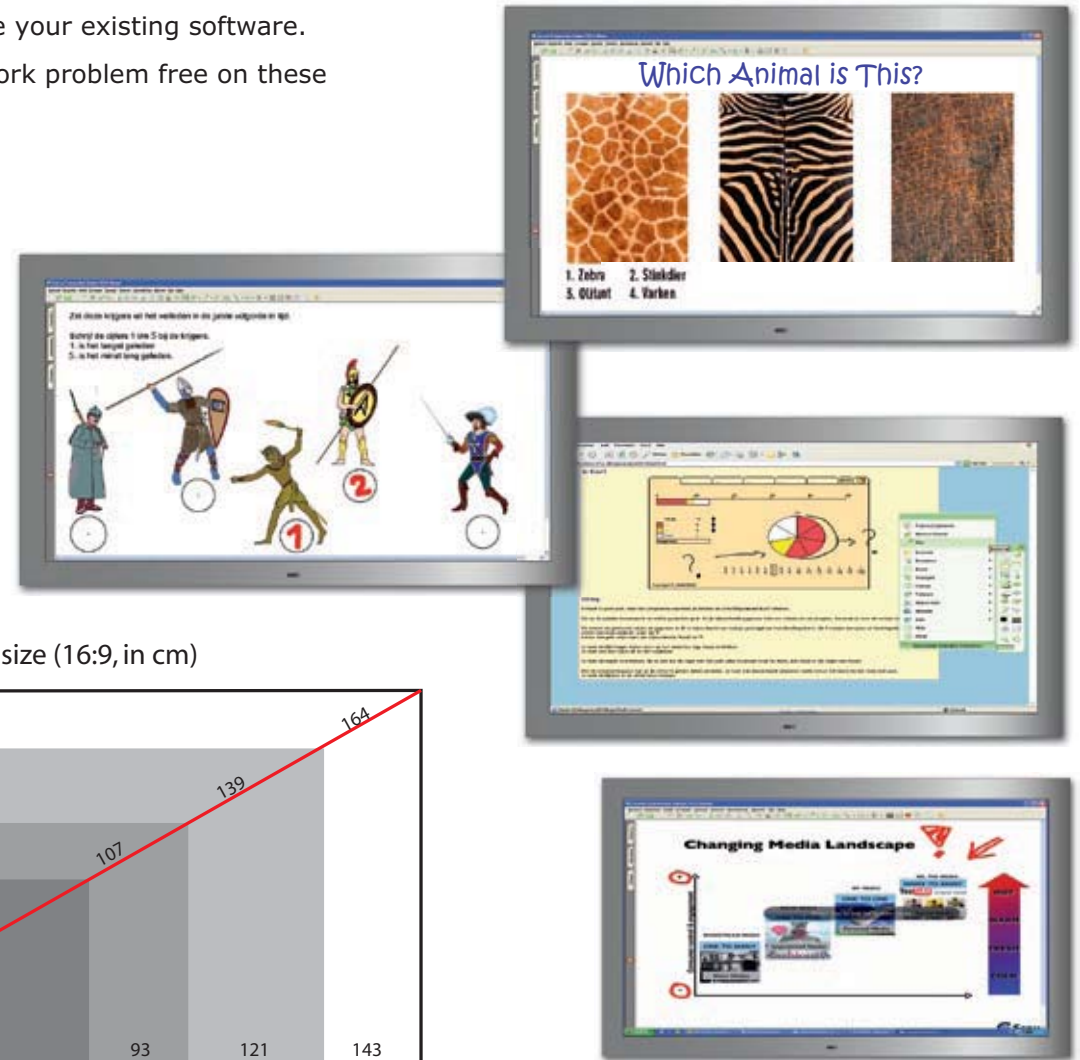


Training

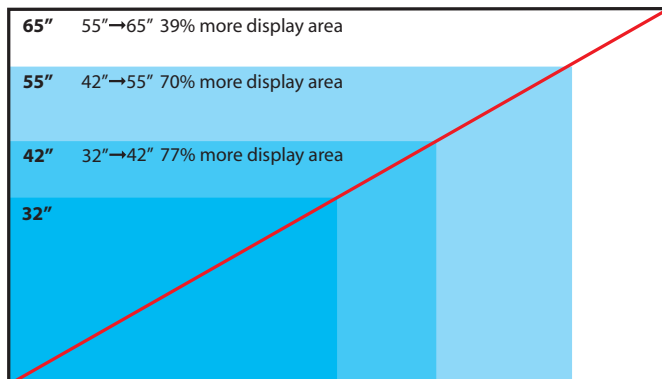
We offer some short introduction courses upon request. However, normally the brief introduction immediately after installation of the system makes for a speedy start.



Since the Focus Touch monitors are **software independent** you may use your existing software. Stand alone varieties of all known software programs for digital boards work problem free on these screens. That means no training required – get started immediately!



Comparison screen surface (16:9, in inches)



Comparison screen size (16:9, in cm)

